

Fairway Deluxe 3-Sided Golf Car Enclosure

Club Car® Adapter Bar Instructions



This adapter bar allows for the Fairway Deluxe 3-Sided Golf Car Enclosure to adjust to fit any Club Car. It must be installed before fitting your enclosure to your golf car.

1. Assemble your adapter

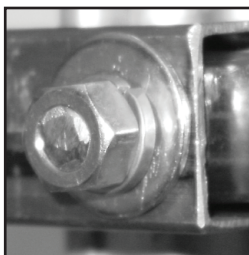
Slip the two pieces of your adapter into each other to form a 'U' shape as shown above.

2. Bolt your adapter to the rear roof posts of your golf car

Your adapter bolts to the rear roof posts using two U-bolts. Locate the two U-bolts from the parts bag. Put the adapter up to the top and inside of the rear roof posts of your golf car as shown above. Slide the adapter bar ends in or out to line up a set of holes on the adapter on either side of both roof posts. Insert one U bolt over each roof post and through the holes in the adapter.

Adjust the adapter so that it is level and the tops of both ends of the bar are just below the roof line.

Put a washer on each end of the U-bolt, then a lock washer, then a nut, and tighten all nuts with a wrench.



3. Attach the roof line strap of the enclosure to the ends of the adapter

There is an additional step after instruction 2 in the main enclosure instructions.



At the rear of the golf car lift the cover up toward the roof. At both rear corners of your enclosure there is a cutout where the roof line strap shows. Insert the enclosure roof line strap in this cutout in the both ends of the adapter as shown.



Classic Accessories, Inc.
Kent, WA, USA 98032
www.classicaccessories.com
©2008

72992 08cG55_10214