

Instructions: Fairway Golf Car Organizer



⚠️ WARNING

Make sure that your field of view is not obscured after mounting your Golf Car Organizer to your golf car.

⚠️ CAUTION

Be sure your organizer is strapped securely and tightly to your golf car.

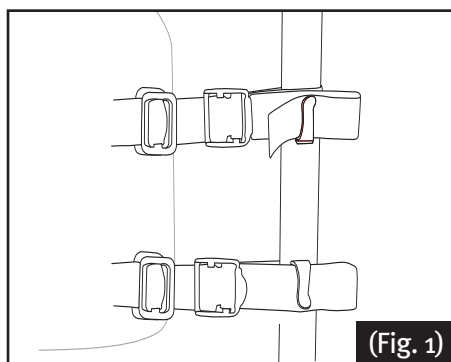
CAUTION

Although your organizer is treated to resist and repel water, no fabric is completely waterproof. Wrap any items that can be damaged by heavy rain in plastic.

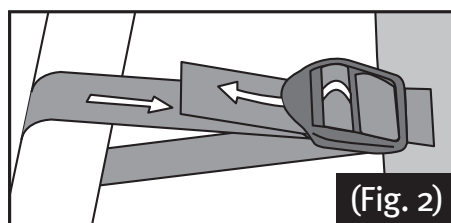
Installation onto a golf car

Your organizer attaches to the inside of your golf car on the roof support posts just under the roof line.

If you are attaching your organizer to a Club Car® golf car you will need to use an adaptor bar which is sold separately. Please see the next section; "Installation onto Club Cars®."



(Fig. 1)



(Fig. 2)

Wrap the four web straps found at either end of the organizer around the roof support bars (Fig. 1). Thread the end of each strap through the buckles, running the strap through the buckle threading path (Fig. 2).

Secure loose strap ends into the provided strap keepers.

Fold or roll any loose web straps over upon themselves to form a 2-3 inch length end then slip the folded web strap into the open hook to secure your straps.

Note that the six straps located inside the main center pocket are needed only if you are installing your organizer onto a Club Car® golf car. If you are not installing your organizer on a Club Car® these are unnecessary.

Installation onto a Club Car® golf car



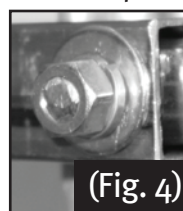
(Fig. 3)

Before fitting your Fairway Golf Car Organizer to a Club Car® golf car an adapter bar (sold separately) must first be installed.

Adapter bar assembly

Slip the two pieces of your adapter into each other to form a 'U' shape as shown (Fig. 3).

The adapter bolts to the rear roof posts of your golf car using two U-bolts. Locate the two U-bolts from the parts bag. Place the adapter on the top and inside of the rear roof posts of your golf car as shown (Fig. 3). Insert a U-bolt over each roof post and through the holes in the adapter.



(Fig. 4)

Adjust the adapter so that it is level and the top of both ends of the bar are just below the roof line. Add a washer on each end of the U-bolt, then a lock washer, then a nut then tighten all nuts with a wrench (Fig. 4).

Attaching your organizer to the adapter bar

Detach the four buckle straps that are connected to your organizer. Your organizer comes with two short straps with buckles on either end and four rip-and-grip close



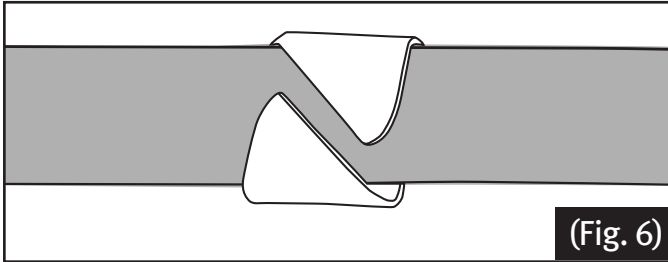
(Fig. 5)

straps that are used to attach it to the adaptor bar. You can find these straps inside the main center pocket. Locate the two straps with buckles on either end. These straps

attach to the D-rings on the top corners of the back of your organizer (Fig. 5). Attach the end of the strap to the D-ring on the organizer by turning one of the end buckles and passing the short end through the D-ring. Rotate the buckle to keep it from slipping back through the D-ring.

Instructions: Fairway Golf Car Organizer

Repeat with the strap on the opposite side of your organizer.



Slide the webbing strap into the end of your adapter bar as shown (Fig. 6).

Now locate the remaining four rip-and-grip closure straps. Run these straps through the plastic rectangle loops located on the inner seam of the back of your organizer. Wrap each rip-and-grip strap around the upright posts of your golf car. Pull each strap tight and wrap it back onto itself to secure.



Attaching a Fairway Drink Tote

A Classic Accessories Fairway Drink Tote (sold separately) can be hung from the bottom of your organizer (Fig. 7). Attach the Drink Tote by wrapping the rip-and-grip straps on the Drink Tote through the four D-rings on the bottom of your organizer. Pull each strap tight and wrap the strap back onto itself to secure.

Cleaning

Clean your organizer with a soft brush and warm water. **DO NOT USE SOAP** as it can damage the protective coatings on the fabric. Air dry.

Storage

To avoid mildew, be sure that your organizer is completely dry before you store it for an extended period in an enclosed area.

Warranty

Your organizer is factory warranted for workmanship and materials for one year after purchase.



WE COVER YOUR GEAR™

Classic Accessories, Inc.
Kent, WA, USA 98032
www.classicaccessories.com

©2007