

# Instructions: The Kennebec

## Materials list:

- 1 float tube cover
- 2 pontoon flotation bladders
- 1 rear bladder
- 1 mesh stripping apron with spreader bar sleeve
- 3 piece spreader bar
- 1 bladder repair kit (contains: repair instructions, glue, two PVC patches and a deflation tube)

## How to inflate your float tube bladders

Kennebec float tube bladders are designed to be inflated by mouth or foot pump.

To inflate the pontoon bladders, open the valve by turning the cap on the valve stem counter-clockwise. After inflation close the valve by turning the cap clockwise.

Some pumps will connect to the bladder valve stem easier if you remove the blue cap from the end of the valve stem—just unscrew the cap and then pull it off the stem. Be sure that you do not lose the cap as the bladder will not hold air without the cap.

To inflate the rear bladder just pull out the valve and blow. To deflate the rear bladder you can insert the small plastic tube from your bladder repair kit into the open valve to wedge it open.

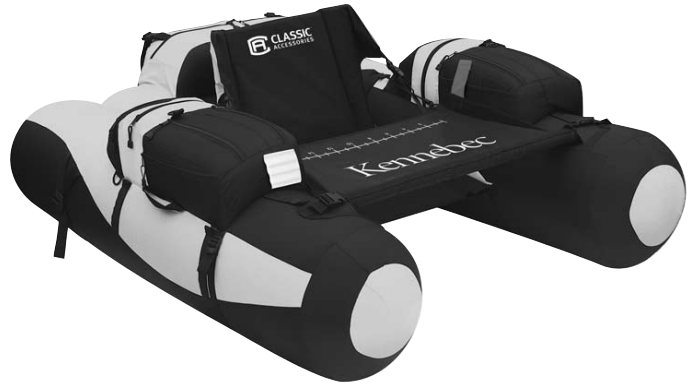
## Inflating and assembling your float tube

1. Place your cloth float tube cover flat on the floor with the pockets facing up and unzip the zipper along the inside of the pontoons on the cover.
2. Inflate the pontoon bladders just enough to hold their shape. Unzip both armrest pockets on your cover and find the small hole where the bladder valve stem will slip through. Now slip the pontoon bladders into the cover. Be sure that the valve stem comes through its hole in the armrest pocket and that the bladder is evenly distributed within the cover. Check that the bladder is lying all the way up to the front and back of the pontoon pocket. It should be untwisted, flat, and lying dead center underneath the armrest pockets. (A twisted bladder will distort the cover when you blow it up).
3. Partially inflate the rear bladder and insert it into the lower rear pocket (the zipper is on the floor of the pocket). Be sure it is straight and untwisted within the pocket then close the zipper so that only the valve remains showing. Finish inflating the bladder and then close the zipper. **It is important that you do this before you inflate the pontoon bladders.**
4. Inflate the pontoon bladders until most of the wrinkles are out of the cover. If any twists develop stop, deflate the bladder, straighten it within its pocket and reinflate. An indicator of correct positioning is the valve stem—it should be sitting squarely in the hole and sticking straight forward. After inflation zip up the pontoon chamber pocket.

There is also one tension strap under the rear bladder that prevents the pontoons from spreading under load. Adjust as necessary with the buckles provided on the either pontoon by the backrest.

You may need to add or release some air if you travel between low and high elevations or if the temperature changes. Always take out some air before leaving your float tube in a car—the heat can expand the air in the bladders quite a bit.

5. Connect the three spreader pieces by inserting the two long tubes into the shorter coupling tube with the angled ends on both long tube ends facing the same direction. Now place the mesh stripping apron on the floor with the graphics facing up. Slip the spreader bar with the angled ends facing down into the fabric sleeve at one end of the apron. Slip the ends of the apron sleeve into the fabric receptacles on the top and front of the left and right pontoons. Clip both receptacle buckles into the corresponding buckles on the spreader bar.



6. There are two backrest support straps sewn to the seat backrest with a side release buckle on either end. Be sure these buckles are clipped to their corresponding parts on the inside side pockets. Adjust the length of the strap for a comfortable seat back angle.

## Launching and using your float tube

1. Start with a gentle slope (like a boat ramp).
2. At the water's edge unhook one of the elastic cords holding the stripping apron to the back inside of your float tube and unclip the spreader bar on the same side.
3. Attach fins to your feet, then place your float tube in knee-high water. Step into your tube from the open side and turn so that your back is facing the backrest. Now reinsert the spreader bar into its receptacle on the pontoon and re-clip it into the receptacle buckle.
4. Now just sit down in your float tube, refasten the stripping apron and float. Practice kicking with your fins to go backward or to turn.

## Safety

Be a smart floater. Use a Coast Guard approved personal flotation device while using your float tube and fish with a buddy. Your Kennebec float tube is designed for calm water. It is not to be used as a river rafting device. Never float during thunderstorms or in any rough weather.

There is a safety flag holder on the back of your float tube under the tow loop. Please check your local laws. Some states may require you to fly a safety flag when floating.

## Care and storage of your float tube

Always partially deflate the bladders before storing your assembled float tube in a vehicle or hot area. The air in the bladders can expand significantly.

If you are not going to use your float tube for an extended period deflate it and store it. To avoid mildew, be sure that your float tube is dry before you pack it and that you store it in a dry place.

## Warranty

Your float tube is factory warranted by Classic Accessories, Inc. for workmanship and materials for one year from the date of purchase. **Over-inflation or use for activities other than floating will invalidate the warranty.**



WE COVER YOUR GEAR®

Classic Accessories, Inc.  
Kent, WA, USA 98032  
www.classicaccessories.com  
©2008